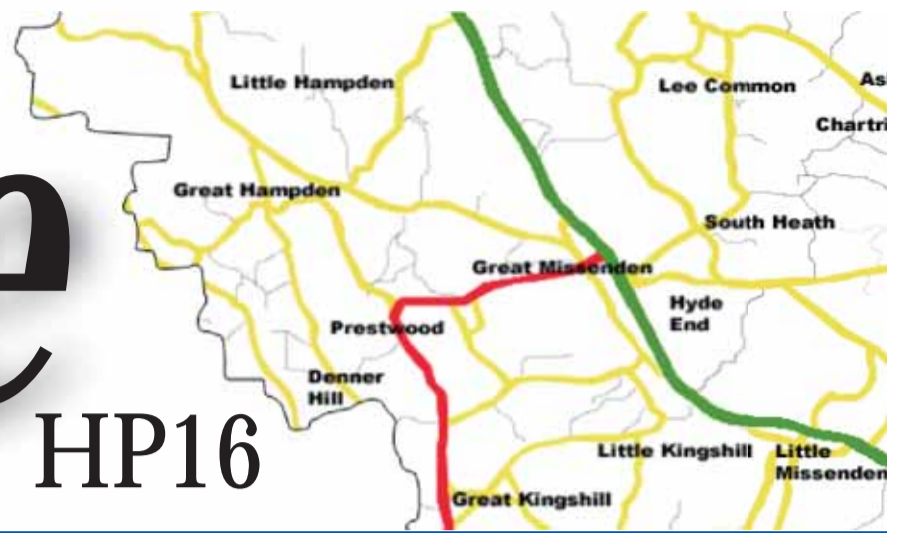


The Source

HP16



The community newspaper for HP16

Issue 1, October 2007



p2/3 NEWS



p8/9 SOURCE YOUTH



p10/11 BUSINESS



p16 SPORTS & LEISURE

Discover *The Source!*

Here it is! The first edition of your community newspaper, a resource for everyone associated with HP16, for everyone who knows it is not just a post code! After many months of planning, this is where our journey begins and we truly hope that you will be a part of it. Whether as a contributor or reader of the news, information and comment about your community, we want you to feel involved and, in the coming months and years, to benefit from the opportunity of having a paper with a real local focus. **Turn to page three to find out more about our enterprise. We hope you enjoy it!**

Strange sounds in the woods



Red kite carving

Angling Spring Wood, Great Missenden, is bang in the middle of the HP16 area and the site of the first audio trail initiated by the Forestry Commission.

If you have an MP3 or MP4 player, you can download eleven one-minute talks from the internet (www.anglingspringwood.org.uk) and listen to them at specified places in the wood marked by posts carved with appropriate symbols by Prestwood wood-carver Malcolm Hildreth. Leaflets are also available showing suggested routes.

The wood was selected after local environmental group, Prestwood Nature, responding to concerns of local residents, had talks with Chiltern District Council, which owns the wood, about its future management. As a result Prestwood Nature carried out a survey of the natural history and archaeology of the wood and put forward a new management plan based on the twin principles of nature conservation and public access. John Morris of the Chiltern Woodlands Group was appointed forestry consultant and funding is being sought for major improvements.

Angling Spring Wood is a typical example of Chiltern woodland. It supports a number

of uncommon species that depend on the right management to preserve the eco-system that has built up over millennia, as the site has probably always been wooded since the last Ice Age.

The new audio trail will guide you through. Stopping at each of the marked posts, you can hear talks which explain various aspects of the wood, its past, natural history and man's use of it.

The talks were recorded by professional actors such as Toby Jones, the voice of Dobby the House Elf in Harry Potter and the Chamber of Secrets, and Toby's father, Freddie Jones, a character actor with an illustrious career in film, theatre and TV. Each repre-

sents the voice of a different tree, while the Green Man (voice Oliver Bernard) introduces the trail from the Green Man post at the eastern (Great Missenden) entrance to the wood.

While the trees, badgers, deer and birds may be evident to most visitors, they and the wood as a whole depend on a host of small organisms inhabiting the forest floor, such as fungi, slugs, snails, insects and so on, some of them nationally rare. Until Prestwood Nature carried out its 2004 survey, no-one knew of their existence here at all.

Find out more about Prestwood's own 'Green Man' on page 4.



Contents and Contacts

- Letters – page 14
- News – pages 2 & 3
- Interview – page 4
- Community – pages 5, 6 & 14
- Art & Heritage – page 5
- Environment – page 7
- Source Youth – pages 8 and 9
- Business – pages 10 and 11
- Puzzles – page 12
- Health & Wellbeing – page 13
- Events – page 15
- Sports & Leisure – page 16

Editorial panel

Stuart Jones Sharon Kavanagh
Maurice Roberts Colin Veysey

HP16 - The Source
c/o Great Missenden Library
High Street, Great Missenden HP16 0AL

Telephone: 01494 865333
Website: www.hp16.org.uk
Editorial: email editor@hp16.org.uk
Advertising: email adverts@hp16.org.uk

© HP16 CIC 2007. It is our policy to correct any errors in print. If you find an error of fact in these pages please let us know. We will carry any corrections or clarifications at the earliest opportunity. While every care has been taken to ensure that the data in this publication is accurate, neither the publisher nor its editorial contributors can accept, and hereby disclaim, any liability to any party to loss or damage caused by errors omissions resulting from negligence, accident or any other cause.

HP16 - The Source does not officially endorse any advertising material included within this publication. However we are proud to be associated with businesses in HP16 area and hope that you will support them.

To protect the rights of authors, we have to state that all rights are reserved. No part of this publication may be reproduced, stored in any retrieval system, or transmitted in any form – electronic, mechanical, photocopying, recording or otherwise. However, if contacted, we are happy to assist you to obtain the rights to use articles or photographs in non-profit situations or arrange an appropriate payment structure for commercial applications.

HP16 – The Source is independent and non political.

This community newspaper is printed on 100% recycled paper. Please recycle it again.

ISSUE 1, OCTOBER 2007

Deadline for contributions and advertisements for our December issue is **Friday 2nd November.**

The Community what?

The Community Vision for HP16. Yes, it's unlikely that you have heard of it unless you are one of the few hundred local people who have contributed their views. It's one of the reasons that we decided that we needed this newspaper; there was no way of getting the message to you because it's not sensational enough for the other newspapers.

Basically the Community Vision is a survey of local people's views to find out what they think about the area that they live or work in so that we can try to work out if anything needs to be done for the future. When we say 'we' that means you, too. National government is increasingly saying that communities can decide what's best for them rather than being dictated

to from Whitehall, so we figure we should take them up on the offer.

Clear as mud? Probably, but all will become obvious soon because you will receive a leaflet through your door called 'Community Vision for HP16 – an Emerging Vision, Autumn 2007' that will tell you all about it. Please read it and let us know your views. You never know, it could be worth it.



What's your vision?

Situations vacant

The ambitious, new community newspaper project, HP16 - The Source, seeks local individuals to help make the newspaper into a real community resource. If you have any of the following experience, please contact us: creative writing, photography, sales & marketing, accounting, adminis-

tration, web design, distribution, local knowledge. If all you can offer is your time and enthusiasm we would still like to hear from you. These are voluntary roles and require a commitment of an hour or so a week. Call 01494 865333 or email volunteers@hp16.co.uk.

Conservation in HP16



The region from Speen in the west to past Great Missenden in the east and from the Hampdens south to Hughenden has been recognised as an important area for conservation intervention in the county's latest biodiversity action plans.

While it has no major nature reserves, many uncommon species of plant and wildlife survive in various places, the area

has a very active environmental group and some of the major landowners are very favourable to conservation. There are therefore many opportunities for protecting and improving the environment. The quality of our green spaces is not just a matter of conservation; they also ameliorate climate change and are the reason why most of us have chosen to live here.

NAG

Aimed at being a point of contact between the community and the police, the newly formed Neighbourhood Action group (NAG) has the potential to be a really positive influence in the area. Area Beat Officer Chris Ging wants to be a friendly face – while acting to stamp out anti social behaviour and reduce speeding! Already, he is aware of and investigating the recent late night incursions of tyre squealing racers from other areas. We can help Chris, the NAG and the police by calling 0845 8505505 when we become aware of these types of behaviour.



Tyresome pursuits

Community funding

The Source would not have been possible without funding including donations from the District and County Councils, the Revitalisation Group, the Little King-shill Society, Prestwood Theatre Club and valuable revenue from local advertisers. The Buckinghamshire Foundation, a charity dedicated to promoting local community activity, has also donated £500 towards our start-up

costs. They specialise in making awards to groups who are not able to access support, giving more than £1.4 million to over 900 projects since January 2000. The Foundation would like to hear from small community groups working to improve the quality of life within their area and can be contacted on 01296 330134 or by email at ebanister@thebucksfoundation.org.uk.

Leading in the Chilterns

The Chilterns Conservation Board recently made a successful application to put in a bid for £3 million of EU 'LEADER' money to be spent on rural communities in the Chilterns. Since Great Missenden is top of the list of rural towns within the area it would be good to see a project from the area put forward for inclusion. The emphasis is on the involve-

ment of local farmers, foresters and business people and those involved in voluntary groups, so if you are one of those people we need you! This is a one-off opportunity to try to get proper funding for the benefit of this area and it would be a shame to miss it. If you are keen to be involved, please contact Shirley Judges on 01494 864399.

Retail round-up

We had two official open evenings in September: Chiltern Opticians, who moved to larger premises in Great Missenden High Street, and No.1 Church Street Gallery. It's rumoured that we may have a chocolaterie opening in the vacated optician's premises.

Victoria Pike's Café Toria is going well and she is eager to take on buffets, business lunches

and party catering. Legallienne Designs are already planning to expand with their range of bespoke bridal wear.

Tricia Weber's Flower Room is moving in October into the former Tots 2 Teens shop at the junction of Station Approach and High Street.

What's happening on the retail front elsewhere in the HP16 area? Please let us know.



Chequers Parade and (above) Farmers Market

Our vision for *The Source*

You're possibly wondering why you've received this newspaper. After all, when was the last time you received anything that's specifically to do with where you live or work other than a council tax or rates bill? Well, let us enlighten you: if you buy one of the local newspapers you might struggle to find anything that relates directly to this area unless it's something sensational. The day to day life of the village communities that make up the HP16 area is generally overlooked but there are thousands of people here and there's loads going on. So, a group of residents and business people have decided to do something about it by creating their own - your own - newspaper. That's right, this isn't a local authority initiative - although it has their backing - it's ours!

We call it *HP16 - The Source* because we want it to relate to the area and believe that it will be a source of relevant information for you, complementing the many local newsletters, which are of real value. The truth is that it really is different; it's a newspaper for you,

about you and by you, delivered free to your home every 1-2 months. By filling the gap in the local newspaper market for Great Missenden, Prestwood and the surrounding villages, it brings you news and views, information and connections in this area. It's an opportunity for people who live here, work here and play here to share in the life of the community.

We've set up a Social Enterprise called HP16 CIC (Community Interest Company) so that we can raise money and so that any surpluses generated can be put towards local good causes. But we need you to help us: to produce the next edition we will need news, stories and comment about the people and places around HP16; you can write those stories. We will also need advertisers, of course! Tell us what you think about this edition and what future editions should look like but please be prepared to help to shape them.

We will be offering you a range of opportunities to get involved in this community enterprise. For example, just complete

and return the reply slip opposite if you want to subscribe as a member. There's plenty of other ways to get involved so, when you've read what we've put into

this first edition, please contact us to find out how you can help to make this newspaper into something really relevant for your local community.



Where are we going?

Please get involved!

We are very keen to hear from you if you would like to be involved in HP16 CIC. As it is a community organisation we are particularly keen to welcome new community voting members. HP16 CIC will use all its income and assets to promote its community benefit purposes, so membership will bring no financial interest or benefit (i.e. the CIC will operate on a "non-profit distributing" basis). Each member will have one vote. The subscription is £5 and acceptance as a member is at the discretion of the board of HP16 CIC. Should you simply wish to make a donation in addition or instead of membership we would be very grateful for your support.

- I wish to become a member and enclose a cheque for £5 payable to HP16 CIC and / or
- I wish to make a donation to HP16 CIC and enclose a cheque for _____ made payable to HP16 CIC

Full name: _____

Address: _____

Phone number: _____

Email address: _____

Please cut out this portion and return it in an envelope with your cheque(s) to HP16 CIC, c/o Great Missenden Library, High Street, Great Missenden, HP16 0AL.

Prestwood's 'green man'

Interview with Malcolm Hildreth, Prestwood wood carver



Malcolm Hildreth at work

by Val Marshall

How did you start wood-carving?

When I left school thirty years ago an apprenticeship became available at a furniture works in Downley where my father was working as a veneer manager. I had been a frequent visitor to the factory even as a child, cycling over there with him, and thought that carving was the most interesting job in the trade. But even as I started the furniture trade was in decline in the area, and I worked at Mines and

West only eight years before the carving came to an end. When the factory closed it was replaced by housing, and I became self-employed.

So you started to work from your home bench, was there much work?

Yes at first it was crazy hours. I was carving chair backs for many chair-makers and working evenings and weekends to meet demand. There have been times since then when the work level has gone down, but now it seems

to be on the rise again, and the variety of work has increased, so it's not just chair backs these days. Some of the work is very specialised, such as making a match for older work, and some is lettering and inscriptions for remembrance, so needs to be carefully done, but much more interesting.

Has your family always been involved in furniture making?

Members of the Hildreth family in the village have traced ancestors who were bodgers in the woods, but I'm not sure about my branch.

Let's talk about the Angling Spring job. Was it very different from other work?

When the logs complete with bark arrived on my doorstep, it was very daunting. I wondered if I would be able to make anything of them. I have only used green wood (unseasoned) once before, and that had been turned and smoothed before I worked it. But this time I had to strip the bark myself and create the surface for carving. Working the green wood was easier because of the moisture in it, and it made a lovely smell as I carved. The sap was sticky though and got everywhere on my hands and clothes. The job seemed to go very smoothly, and it was always interesting, because each piece was different. It was a rare opportunity to do the work and express myself, and allow the wood to go where it wanted. I let it form itself and it came out quite well. I'm particularly pleased with how the butterfly worked out, and I'm pleased with how the posts look in situ, clear in the distance.

How long did each post take to make?

On average I spent a full day on each, though the red kite and the green man both took longer.

Which type of wood do you prefer to work with?

Of course I have to say oak because it is beautiful to work. It is smooth and unlike Brazilian mahogany (which the chair makers use for the backs), oak doesn't need sandpapering and shows the carving more clearly. English oak though is rock-hard and can break your chisel, so it is easier to work some of the foreign oaks such as Japanese or American oaks.

How do you spend your spare time if you have any?

I need to get away from work. I love to walk around parts of London, finding out about different areas of the city. I also make long-distance, off-road cycle rides most weekends, cycling from home and back, often very tired and aching from the exertion. The other week I cycled to Dorchester and Wittenham Clumps. I didn't have much time to look around but was interested to see some carved marker posts down there. On our return we picked up the Ridgeway – it was a very long way!

Finally, has Angling Spring Wood always been part of your life?

Oh yes, I used to play there as a child and now I walk to and from the station through the central ride, it is especially beautiful on frosty evenings with the moonlight shining through the bare branches. Also the national cycle network passes through the top of the wood. It's a great way for me to leave Prestwood and return, up Gipsy Lane and into the wood that way. I can keep an eye on my posts, and will watch with interest to see how they weather. I hope weathering will highlight the carvings. On a personal note I really enjoyed doing the work, and hope everyone else enjoys the posts too.



At the heart of Dahl's stories

Following a whirlwind life of action and adventure: living and working in Africa, flying (and crashing) WW2 RAF planes, moving back and forth between the UK and America, where he was befriended by the likes of Walt Disney and President Roosevelt, Great Missenden might have seemed an unlikely place for the author Roald Dahl to settle. But for him it was to become a source of inspiration and the birthplace of his enduringly popular children's stories.

Everyday sites in the village became the settings for the adventures of his beloved characters. When Matilda's mother leaves her alone to play bingo in

Aylesbury, In Dahl's mind's eye, Matilda toddles along every day to the very library many of us take for granted.

The Roald Dahl Museum and Story Centre, set up to promote creativity in young and old alike, has created a comprehensive Village Trail which uses the deceptively normal streets of Great Missenden to discover the magical sites from your favourite stories. And after all that imagination-feeding, you can pop into Café Twit for some refreshing frobscottle and a delumptious piece of Bogtrotter chocolate cake! To whet your appetite call us on 01494 892192.



Tasty book from Trinity

The good cooks of Holy Trinity, Prestwood, have contributed their favourite recipes for an impressive new cookery book that was launched in September. The catering committee (known as SEARCH) are grateful that two members of the congregation - a graphic designer and a retired printer - have been working to ensure a publication of a high standard. In addition their

Chairman, Mike Cobley, enlisted the help of an old friend, Graham Jeffery, an accomplished and witty cartoonist who has published books in his own right. The result is a well-designed collection enlivened by excellent cartoons. 'Searching for a Recipe' retails at £7.50 and will make an ideal Christmas present. Order your copies from Mike on 01494 864952.



Happiness is a place called hamlet

Between Great Missenden and Ballinger by way of Frith Hill lies the hamlet of South Heath, one of several in the HP16 area. Its newer residents may only know it as a dormitory settlement where houses change hands for as much as a million pounds or more and visitors come mainly for its excellent garden centre. But it's likely that neither they nor many residents are aware of the history of

the place. A recent interview with local octogenarian resident and historian, James Venn, who has lived in South Heath since the 1960s, revealed the previous existence of as many as three pubs, a flour mill and a regular bus service to Great Missenden station where, in the 1970s, a return ticket to Marylebone cost less than a pound. But what's the future for places like South Heath

and their beautiful rural surroundings and is their history of relevance today? How little is Kingshill? Who shelters in The Lee? Can we get to the bottom of Hotley? What's in Herbert's Hole? We hope to bring you more about where you live in future editions and are keen to hear your views and your memories of local people and events, so please contact us with your stories.

Light relief

Seven Chiltern habitats including Mobwell developed unusual signs of roadside adaptation over the summer. Was it the weather? Climate change? Signs of more to follow? Firstly substantial stalks sprouted, then anonymous buds two metres from the ground! Finally, blooms appeared, while at the roadside colourful luminous cats eyes glowed like Heathrow at night.

This was the rolling out of a Buckinghamshire initiative to

reduce our carbon footprint. BCC's press release said "287 streetlights, on seven selected rural and semi-rural sites throughout the county, are being replaced with ecologically-friendly alternatives. This is the first phase of a groundbreaking trial, thought to be the first of its kind in the country.

"Advanced road signage technology and safety measures, such as solar powered studs, provide a new approach to the need for

street lighting in rural areas where pedestrian usage is minimal."

It's a three year trial, with hopes for expansion. Over the first year savings of £15000 are predicted with dramatically reduced energy consumption. The old dead stumps? They remain until the trial is complete.

Of course the majority of our HP16 area has never had street lighting anyway... so let us know what you think about the trial!



You can help us!

People & places
Good news stories

Events

Photos

Suggestions

Send them to us by email at editor@hp16.org.uk

or by post to the address on page 2.



Prestwood Theatre Club

Panto season approaches

Prestwood Theatre Club held auditions last month for this year's pantomime production, Dick Whittington and his Cat, which will have something to please all ages. They are still keen to hear from anyone who is interested in taking part, either on stage or behind the scenes.

The Club is also staging a Supper Quiz on 27 October at

Prestwood Village Hall where, in addition to food and the quiz, there will be a range of sketches from club members.

The club continues to meet on the first Monday of each month and would always be interested in meeting new members. For details call 0709 203 7972 or visit the website www.prestwoodtheatreclub.co.uk

What do you have to do to be a 'good parent'?

The issue of bad behaviour among children and young people is a national preoccupation, and it is often blamed on the parents. Although becoming a parent should be a wonderful thing, all too often adults find themselves baffled by their children and apparently unable to control their behaviour.

In response to this situation a course called 'Creative Parenting' will be piloted in Great Missenden this autumn. Following a taster session on 18 September when interested people were able to discuss components of the course and consider whether it would be of use to them, a six week series of meetings com-

menced. Trained facilitators are helping the participants to build relationships with each other, share common issues and learn from each other.

The dates for the first Creative Parenting course are 2, 9, 16 and 30 October and 6 November. All the meetings are held in the Oldham Hall, Church Street,

from 7.30-9.30pm. Ideally both parents should attend the course together, but this is not always possible and it would still be beneficial for one parent to attend alone. If you are interested in a future Creative Parenting course please call the Parish Office on 01494 862352 or Revd. Rosie Harper on 01494 728966.



The church at Little Hampden

Although one of the smallest in the county, the church at Little Hampden has a lot to offer, with extensive wall paintings dating from the 13th century. It features in a new book, *Buckinghamshire's Favourite Churches*, published by

The Buckinghamshire Historic Churches Trust.

The twice-monthly services are supported by a dedicated congregation and frequently the church overflows for weddings and baptisms. To join the con-

gregation for one of the services (communion on the second Sunday of each month and matins on the fourth) turn up at 11:00 when you'll receive a warm welcome, coffee and, if you're lucky, home-made biscuits.

Kids Just Love It Here!

The chances are you already know Patricia Taylor Photography. Perhaps your children are lucky enough to attend one of the schools where she takes her beautiful, relaxed & informal school portraits. But did you know she also runs a successful studio in rural Great Missenden? We caught up with Patricia to find out a bit more.....

It's hard to believe it's almost five years to the day that Patricia walked away from a successful 10 year career with Sir Martyn Arbib's highly acclaimed fund management company, Perpetual. "Perpetual was an amazing experience but I knew I didn't want to carry on in HR anymore." Increasingly she had been thinking about photography. "I've always been artistic so I decided to go back to college and do a part-time course so that I could spend more time with my two boys Jack and Will" Patricia volunteered as the official photographer at Lee Common her children's local school. "Some of the parents asked if I could take school portraits as an alternative to the rather boring ones that are usually on offer. My style of informal school portraiture was an instant hit and I started to get commissions to take family portraits."

That was back in 2004. "I have taken thousands of portraits from new born babies to people in their 70's. I think my main appeal is the range of styles that I am able to offer." Patricia Taylor Photography may be out in the 'sticks' but she can compete with the best in terms of creativity, style and quality. "I aim to have a long term

relationship with my clients - I have heard horror stories about some of the big studios who virtually lock you in a room and won't let you out until you've bought something! I'm just not into hard selling". Many of Patricia's clients are busy professionals and she caters for this by setting up an on line preview after a portrait session. That way her clients can view their portraits whenever and wherever they like - all they need is access to the internet. Being in the sticks is actually proving to be a bonus for the business. A beautiful tranquil setting in 11 acres with no parking hassles. Indoor and outdoor shots can be done in one session which is something that few other studios offer. Patricia runs free sessions for the under 5's on Monday and Tuesday's during school term time. "Kids just love it here - it really brings out the best in them." For older children there are fences and trees to climb, hay bales to clamber over - and of course there is Conker, the donkey, to say hello to. "I am delighted with how things are going. I can't believe I am lucky enough to be doing something that I love. To me it's not just a job - it's a passion!"

To find out more visit www.patriciataylorphotography.co.uk



Win a £300 Portrait Prize!

If you would like a chance to win our prize have a go at our fun competition below. Closing date 31:10:07. e-mail your answers to: patriciataylorphotography@yahoo.co.uk

- 1) Where is Patricia Taylor Photography based?
a) New York b) Great Missenden c) London
- 2) How do clients view their portrait session?
a) Locked in a room b) On line c) On CD
- 3) Who can attend a free portrait session on Mondays and Tuesdays?
a) Anyone b) Under 5's c) Over 60's

Competition Terms
winner will be chosen on 1:11:07
Entrants details may be used for marketing purposes.
Winning session to be taken by 30:04:08

Adder bites pig

A pig was bitten by what appears to have been an adder at a farm near Hyde Heath this spring and had to receive treatment.

Adders are very seldom seen in this area, although they seem to have been commoner in the past according to local farmers. As far as we know in this area, only two people have been bitten in the last ten years. In both cases, the people were working in long grass.

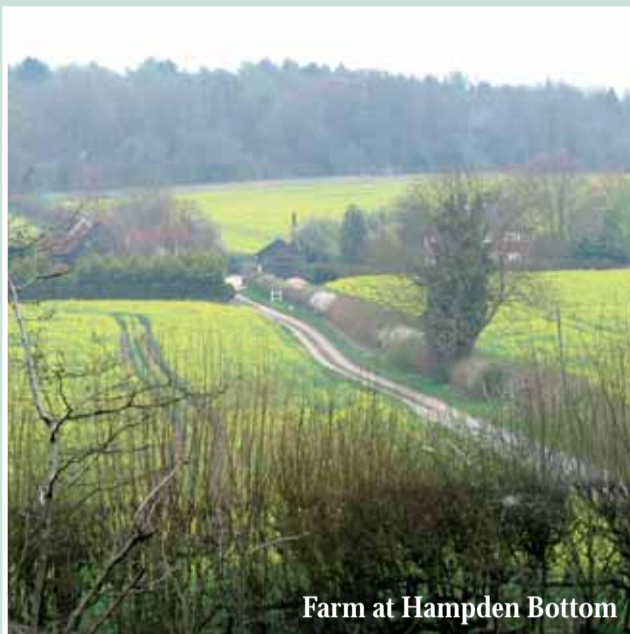
The adder is our only poisonous snake and much smaller than the grass snake.

The bite can be recognised by two "pin-pricks" one centimetre apart, and the part bitten soon swells and becomes paralysed. It is important to loosen all clothing near the bite and get to hospital immediately. The effects are painful and can last several days, but are seldom if ever fatal.

It is fortunate that adders usually notice people well before they get near and quickly disappear. But you should take care in long grass, when neither they nor you may get any warning.



Adder



Farm at Hampden Bottom

All eyes on Hampden Bottom Farm

Hampden Bottom Farm is the first farm in the county to become a Demonstration Farm for LEAF (Linking Environment And Farming), the national organisation encouraging sustainable agriculture that safeguards wildlife as well as producing wholesome food.

Farmer Ian Waller grows wheat, field beans and oil seed rape. The farm also contains populations of nationally endangered annual arable plants

and some areas of species-rich chalk grassland. Lapwings, skylarks, buzzards, red kites, yellowhammers, partridge, hares, bats and badgers abound.

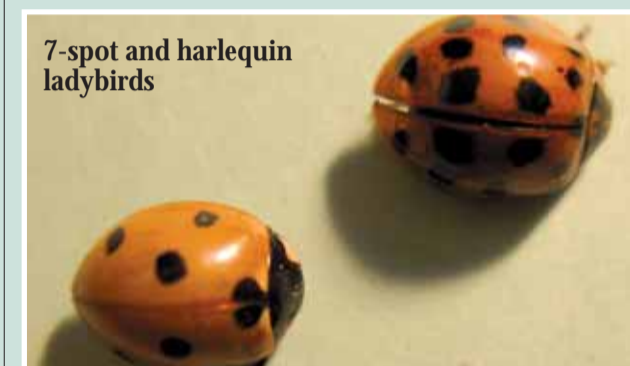
Several public visits are arranged each year and it is well worth taking part in one of these. Hampden Bottom was one of the first in the country to qualify for the new Higher Level Environmental Stewardship grants. See more information on the website www.leafuk.org

Alien invaders

The harlequin ladybird is a large attractive ladybird that comes in many forms and colours. Most commonly it is red like the common seven-spot ladybird, but with more spots and slightly bigger, although it can also be mainly black with red markings.

It arrived in this country with garden supplies and is busy spreading across the country. It was close to this area in 2006 and one was

caught in HP16 for the first time this year in May by Val Marshall of Prestwood on top of Denner Hill. She also discovered another one near Little Kingshill in July. In August Tony Marshall found an adult, a larva and a pupa all on the same day near the parish church in Great Missenden. Although very pretty, they are unwelcome because they out-compete our native ladybirds and even eat them!



7-spot and harlequin ladybirds

Have you seen a glow in the dark?

Following the success of Prestwood Nature's Butterfly Transect last year (which led to the re-discovery of one species that had not been noted for many years), the group also ran glow-worm counts this year. These will be repeated from year to

year, like its existing butterfly transect, to monitor environmental change. If you know of a place near you where you think there are glow-worms, please let Prestwood Nature know at ecorocker@gmail.com or 01494 864251.

Gardeners can help attract wildlife

A huge sigh of relief has gone up from all local gardeners who love wildlife and want to attract more without looking out on one big nettle patch! A recent local wildlife study has found that garden wildlife is as diverse in well-tended gardens as it is in unmanaged ones, as long as the gardener is aware of what is needed to attract wildlife.

The survey, conducted by local conservation group Prestwood Nature, covered Prestwood and surrounding villages. The biggest factor for a variety of wildlife was found to be the range of different habitats within the garden. The greater the range, the greater the biodiversity. The second biggest was bird feeding (more food means more birds), and the third was

the size of the garden.

Although bigger may be better, it is good news for those with smaller gardens who can easily accommodate wildlife by providing a range of habitats. Prestwood Nature is now following up this study with a survey of

the wildlife on allotments. There are plans for various projects, including a demonstration wildlife garden without the use of noxious chemicals and trials of peat-free compost. A preliminary report is available from ecorocker@gmail.com.



Elephant hawkmoth caterpillar



Stag beetle

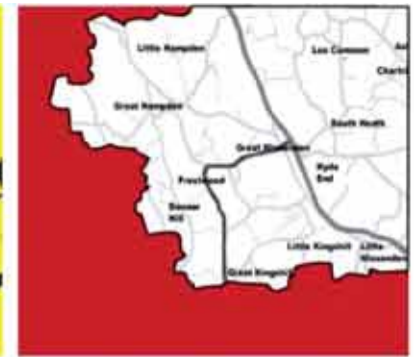
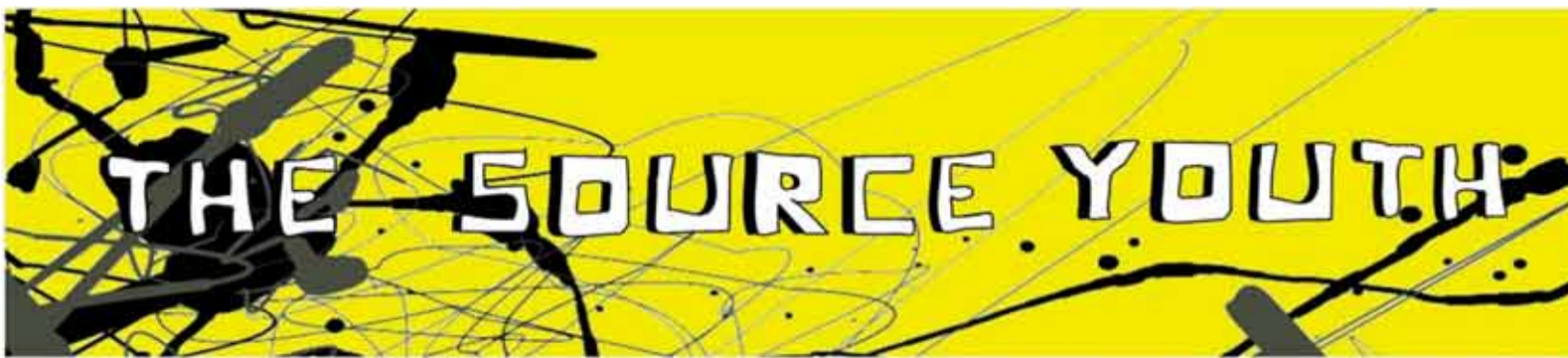
Stag hunting with a difference

The stag-beetle is one of our largest and most dramatic-looking beetles. There are concerns about its survival and a special strategy for its conservation has been developed as part of the UK Biodiversity Action Plan.

The stag-beetle is mostly known from areas around London and the New Forest. The first report of one from this area came from Peter Daltry of Perks Lane, Prestwood, on 3 June this year by Long-

field Wood (near Great Kingshill).

Look out for them in your area too – Prestwood Nature will be glad to receive more reports on ecorocker@gmail.com or 01494 864251.



Getting their skates on



The car park of the Chequers in Prestwood became a skate park on the afternoon of Friday, 31st August. It was some 12 years ago that the young people of Prestwood asked for one! So, it has been a long wait. The "Tribe" - a group dedicated to reaching this age group - pulled into the freshly swept car park in a 4x4 with trailer. Within minutes, Dave, in charge, said "there 'll be blood!" referring to the state of the surface, which was apparently not up to the high standard required by seasoned skaters. However, ramps and pipes were assembled - insurance policies checked, and soon the kids were on a roll, with excellent snacks (including spring rolls) provided by the Chinese Chequers restaurant! Throughout the afternoon, around 50 young people (over 80% lads) came to session the jumps and rails on offer. Halfway through Dave remarked that they were showing both skill and remarkable commitment because not only were they persisting, but there was no sign of any blood!

The event, arranged as an extension to the evenings of Lighthouse, under the name "Lites Out", was a great success. Sara Butler, the organiser and our local Churches Together Youth Worker, said afterwards that she really hopes that we can do similar events in the future and build on the experience.

The PJS Factor

Heard of the X Factor - well, now there 's the ✓ Factor - This year Prestwood Junior School ticks all the boxes. The PJS Factor came to a grand final when the 16 finalists from 160 entries showed off their talents to a celebrity panel of judges. And their resources don 't run out there! The athletics and girls ' cross (x) country teams triumphed in the MPSSA championships; The choir sang at the 'Royal Albert Hall' - and yes - the best academic results since 2001 too!

With great improvements planned for an air-conditioned IT suite and special provision for dyslexia, this is a school that 's definitely on the up!

Celeb judges enjoy the show as one contestant awaits her fate.



Scouts



100 years on and still scouting is one of the best ways of learning how to survive, both indoors and out.

- Biggest co-educational youth organisation in the UK.
- Spaces for both boys and girls in every age group from 6-14.
- Loads of opportunities for adults to help.

Beavers (6-8 yrs) Tuesdays 6.00 - 7.15 pm
 Cubs (8-10½ yrs) Thursdays 6.30 - 8.00 pm
 Scouts (10½ -14 yrs) Wednesdays 7.30 - 9.15pm

For more info:
www.1stgreatmissendenscouts.org.uk
 Email: bhanen@1stgreatmissendenscouts.org.uk





Chiltern Design and Fine Arts Society Art in The Park
 Throughout June 2007 The Misbourne School ran their new 'Art in The Park' where they hosted an outside event on Buryfield in Great Missenden every Saturday.
 Local artists were invited to attend the event and set up a stall selling their work to passing custom. Art in The Park created a great sense of community for the local artists.
 After the success of this event The Misbourne hope to be involved in the organisation of a winter 'Art in The Hall' event in Chesham.



An exciting new venture for Prestwood Village
 With great activities for ages 0-11yrs,
 And opportunity for you to relax in the Café Lite

Sat, 20th Oct 4 - 5pm
 Prestwood Methodist Hall

Sat, 17th Nov 4 - 5pm
 Prestwood Methodist Hall

Sat, 15th Dec 4 - 5pm
 Pantomime Party
 Prestwood Village Hall

A new monthly cafe and club for kids

"That was great - When's the next one?" asked one Dad who brought his kids to the first Café Lite. "Can I bring my friends next time?" one of the other kids wanted to know.
 Prestwood Village Hall became the venue for an exciting party for the kids and a relaxing café for parents/carers from 4-5pm on Saturday, 15 September. Drawn from among the local faith communities a 36 strong team of all ages worked together to create a great atmosphere for people to meet and build positive relationships.
 Café Lite will be on the third Saturday from 4-5pm of each month. The next two (Oct and Nov) will be in the Methodist Halls on the High Street. Then, on 15 December, it will be Pantomime Party Time at the Village Hall! Come along and enjoy the Café Lite experience!

The Zone^{G.T} Missenden

Chill out Zone on a Friday night? - that's what most people want - and for the kids of Great Missenden - that's what's on offer from the end of September! 'The Zone' at the Oldham Hall, in the grounds of Great Missenden Church of England School has a new pool table - just delivered - alongside activities including table football, air hockey and a play station. And, of course, there will be a snack zone too.

This is real action against the complaint that there's not much for young people to do in the area!

6.30pm every Friday night, and closing 8pm. For just £1 it's the Zone for ages 11-15s

Organiser, and youth worker at Saint Peter and Saint Paul parish church, Lizzie Williams says, "We want to give our young people a chance to get together and have fun in an informal atmosphere. I am really pleased how many people have offered to help. It shows that people here really do care."

Lizzie has already been running two church based youth groups called '21 Cent' and 'Wyred', plus contributing to assemblies and classes at the school in Great Missenden.

ELIZABETH WINTGENS GALLERY

Full of surprises! Unusual and different gifts, cards, toys, garments, and pictures.



Long established picture framing, glazing and refurbishment service in our own local workshop.

49, THE HIGH STREET, GREAT MISSENDEN
 01494 866208
 www.elizabethgallery.co.uk

...to see God making a difference

A loving church family including people of all ages and background, actively serving the community, with a passion to see God making a difference.

You'd be welcome to come and be part of the vision!

Sundays at 10.30am
 Prestwood Junior School

King's Church, Prestwood
 newfrontiers A Worldwide family of Churches Together on a Mission

For information phone: 01494 862257
 Email: evkingsp@aol.com
 Or visit the website: kcprestwood.org.uk



Missenden Abbey

Chiltern Prayer Breakfast event

At the time of going to press, the inaugural Chiltern Prayer Breakfast was scheduled to be held at Missenden Abbey on the morning of October 8, a celebration of relationships in business and community. Around sixty local business people were expected to attend along with our two local Members of Parliament, David Lidington and Cheryl Gillan, as well as the Bishop of Buckingham.

The idea of Prayer Breakfasts started in the United States and has spread to many countries. The first were held at the Capitol in Washington and then spread to State capitals, offering opportuni-

ties for committed Christians who are also leaders in the areas of civic society, politics, the church and business to meet and pray together on a different but common basis. The format of a prayer breakfast came about because it was very difficult to get leaders in these areas of the community in the same place at the same time. However, it was soon found that they could feasibly get together early in the day once or twice a year to meet as Christians and also to exchange views irrespective of a political or religious alignment.

The aim of the event is to bring Christians together in a

local and regional sense to work for the good of all the community. Included in the plans for the Missenden Abbey event were an address by Dr Michael Schluter, the well-known Christian leader of the Jubilee Centre and Relationship Foundation, and a short talk by Paul Williams, a successful Christian businessman who brings his faith into everyday business life. Also expected was Sue Wilmot of The Bible Society.

This event cements the position of Great Missenden as the Capital of the Chilterns, not only in a geographical context but also in a community sense. Great

Missenden has an enviable record as a place where churches work together, especially with Lighthouse, with a desire to retain good community values.

Keith Miles, current Chairman of the Revitalisation Group for the Great Missenden – Prestwood area and organiser of the Chiltern Prayer Breakfast, commented: 'Let us wish the event great success and a force for good in the community with strong connections to leaders in business, the churches, and our political representatives.' Keith can be contacted via the group's website, www.gmprg.org.uk.

Dismissals by the book

by Rhona Thomson

If you're in business locally and employ people, you're probably aware of the raft of legislation affecting all aspects of employment from recruitment to dismissal – and if you're not, you should be. When you need to terminate an employment for whatever reason, statutory disciplinary and dismissal procedures exist to make sure that all employers use the same approach. When the government introduced these procedures it was hoped they would reduce the number of claims being brought before Employment Tribunals but, unfortunately, this hasn't been the case with unfair dismissal claims totalling around 45000 cases in the year to March 2007, an increase of over three thousand on the previous year.

Recent appeals tribunal decisions demonstrate that breaches of the procedures are one of the main reasons for findings of unfair dismissal. So, even though the minimum statutory dispute resolution procedures are under review, it's still essential to follow the current procedures in every case. If you fail to comply with a requirement of the relevant procedure, any dismissal will be automatically deemed unfair. If this is shown to be the employer's fault, the tribunal could increase any award that it makes to the employee by up to 50% and that could damage your bottom line.

The three-step dismissal and disciplinary procedure should be followed when an employer is contemplating dismissing or taking relevant disciplinary action against any employee, whether this is on grounds of conduct, capability, redundancy or non-renewal of a fixed-term contract. The checklist is as follows:

- Review your disciplinary procedures and make sure they comply with statutory requirements.
- Make sure that the written statement of terms and conditions of employment issued to an employee includes a reference to any disciplinary rules and procedures, including the appeals process.
- Ensure that everyone who manages staff is trained in the statutory dismissal and disciplinary procedures and knows the consequences for your business of failing to comply.

Get it right or watch your business suffer the consequences!

Rhona Thomson is an HR Consultant based in Prestwood.



You're sacked!



HAWKES DESIGN
& PUBLISHING LTD

**Specialists in corporate design for print.
Quality business cards, letterheads
brochures and mailers at amazing prices!**

Hawkes Design & Publishing Ltd, 59a The Broadway,
High Street, Chesham, Bucks HP5 1BX
t 01494 793000 e phawkes@btconnect.com
w www.hawkesdesign.co.uk

What's new with your business?

Do you have business experience that you could share? Would you benefit from raising your local profile? Are you interested in advertising in or sponsoring The Source? Please contact us on adverts@hp16.org.uk and we will send you more details, or call 01494 865333. The deadline for submissions and advertising for our December issue is Friday 2nd November.



Julie Murdoch

Business Link working with local 'hidden businesses'

Business Link not only sees a clear pattern in the type of businesses located in the HP16 area but also the associated opportunities and issues.

Mark Broerse, the Business Link Adviser working with many local businesses comments: "The HP16 area features a lot of 'hidden businesses' as many are owner managed from home premises. As a result, many find it difficult to raise their profile and let customers know they are there. However, there are local business networks which provide great opportunities and many workshops, some provided free of charge by Business Link, that cover common issues such as marketing and sales."

Julie Murdoch, Partnership Manager at Business Link, also has a busy time coming up in the HP16 area: "We are hosting an Advisory Board and an Intermediary Breakfast Meeting in October at Missenden Abbey and we are working with Bucks County

Council on the Market Towns Initiative which includes the Great Missenden area."

There is also a new broadband grant of up to £250 available for local businesses. This grant is available to enable your businesses to utilise broadband technology, whether you are looking to build a new website for your business, make your current site e-commerce enabled, or would like to buy new hardware or software to streamline your business.

Business Link is dedicated to helping businesses and budding entrepreneurs develop and progress by ensuring they can quickly and easily locate and benefit from the broadest range of public, private and voluntary business support services.

For further information on local events, networking or to arrange a visit from your local Business Link Adviser call 0845 600 9 006 or email: info@businesslinksolutions.co.uk

Keys to networking success explained

by Brian Hardie

It started over a quiet pint. "Brian, we are working on this HP16 business network thing and need an experienced networker's view of the world. Just a few hundred words will do; by next Friday, OK?". This chap can be mighty persuasive.

A few weeks later and the deadline looms, so here is my starter for ten on how networking has worked for me. Whether through business associations or other means, networking is the most cost effective way for many businesses, large and small, to attract new and repeat sales. Here are some tips to get you started.

Be prepared: whether you are approaching a colleague, a friend, a family member or a stranger, how you present your business will make the difference between a satisfying or unsatisfying experience.

Be active and visible: go to meetings as often as possible, even offer to serve on one or two committees. All help will be gratefully received, especially locally.

Circulate: If you spend too much time with any one person, you can't meet others. When you

have exchanged ideas and agreed any actions, thank your contact and move on.

Follow up well: make plans to meet your contact again. Keep them aware of your future plans and ask about theirs.

Use your leads: make that phone call or send the information that you promised. Then, at the next meeting you attend, ask if your contact got what you sent.

Consider networking communities: there are plenty of on-line sites that can be a powerful way to establish connections with colleagues old and new, research organisations and people, and find out about new opportunities.

Join the HP16 Business Network: Go on, you know you want to! If doing business locally appeals to you then this fledgling, free network could be for

you. It's aimed at local people who may not find the formal networks appealing but it won't work if you don't get involved. Check out the pilot website at www.hp16.co.uk and good luck!

Brian Hardie lives in Little Kingshill and is Marketing & Communications Director for Becta



Business questions? Answers!

For key information and advice for anyone thinking of starting or already running a business

Call 0845 600 9 006 or visit www.businesslink.gov.uk/southeast

See our diary of business events visit www.businesslinksolutions.co.uk/events



Source crossword no. 1

Hidden in the completed crossword find the name of an HP16 community and its pub! £10 prize for the first correct entry drawn after the closing date of 2nd November.

by Dialogos

Quickie Puzzle

TANGLED RELATIONSHIPS

Two couples of famous companions have got all tangled up in the following two phrases. Can you untangle them?

JOE MULE TRIO

TRACEY PANTALON

No. 2 Antony & Cleopatra
No. 1 Romeo & Juliet

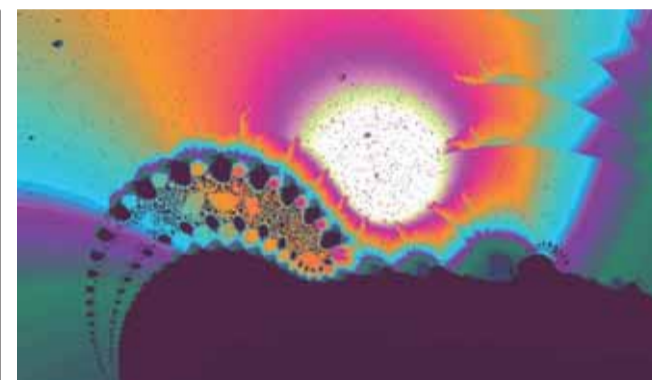
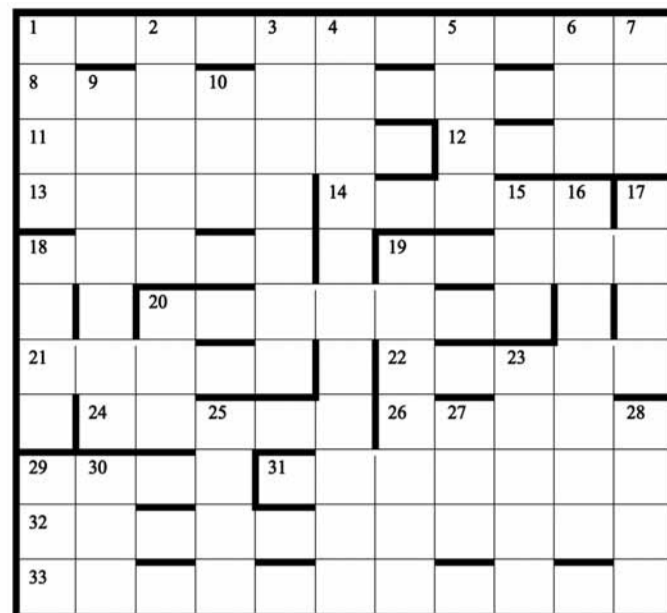
SOLUTIONS

ACROSS

- Another old Dylan song about Heaven's Door? (11; 3 words)
- Greener cemetery (not half!) is disturbed – it's coming out again! (11)
- Reeling puncher to knock bird from seat (7)
- Stolen goods, lifted out of truck primarily (4)
- One pound back on Northern Ireland pancake (5)
- Soiled shoe for an old penny to be washed down (5)
- Mounted on nothing at Wild West show (5)
- Once Lebanon concealed this famous person (5)
- High-scoring draw for everyone, it's said (7; 2 words)
- Sounds like lots of land for victorious Arsenal Ladies coach (5)
- Sailor carries Greek letter for nosy Malayan creature (5)
- Decorative part of character backfires (5)
- Overwhelm with astonishment one facing labyrinth (5)
- It cushions one's ride in Lebanese port (4)
- One down in jazzy drape marched in procession (7)
- Sensational cinematic sound system: I hear feeling on all sides (11)
- My tooth above is broken, nothing lost – but too big down below (11)

DOWN

- Caterpillar food (4)
- Dip toe recklessly? There's nothing lost – it's only lukewarm (5)
- Grave issue or upheaval (7)
- Large fruit-producing establishment could be made from hard car (11; 2 words)
- These fish are slippery or else wriggly (4)
- My name begins with this writer (3)
- Score is 10 up (3)
- Encloses piece of hair in letters (7)
- These people can't start to have the last word (3)
- Length of cloth for part of umbrella (3)
- Inhabitant of Enzed in confusion (7)
- Brat damaged a ski-lift (4)
- Private to be saved in Spielberg film (4)
- Head-cold reported in Middle East country (7)
- Price paid for short measures (3)
- Italian town where Galileo taught (5)
- All others repose (4)
- One of Red Book and Long March fame (3)
- Guitar man in whirlpool (4)
- Bank in Pittsburgh (3)
- The old old river in Somerset (3)



Anybody else around here fascinated by fractals?

Why not send us your favorite?

Cutting Edge Kitchens

when it's more than just a kitchen



Ex-Display Sale

To make way for exciting new designs we are currently having an Ex-Display Sale. Only two years old, these quality kitchens are sold as seen at greatly reduced prices. Contact us or call in for further information.

Idaho Court Wycombe Rd Prestwood Bucks HP16 0NZ
01494 868688 www.cuttingedgekitchens.co.uk

Leicht • Hacker • Bontempi • Neff • Miele • Siemens • Corian • Granite

DESIGN SUPPLY INSTALLATION



'Someday' and 'if only'

These must be the saddest words in any language's dictionary. Ever used them? I have! Fortunately, there's always been someone who loved me enough and was strong enough to help me remove them from my vocabulary.

The child at school says, "Someday, when I leave school, move away from home and go to college I'll be happy and have fun". The University or college graduate says, "Someday, when I get my degree, a good job, my own flat, I'll be happy and on my way!"

The young couple says, "Someday when we get our own home we'll be really happy!" Parents say, "Someday, when the kids have left home and the mortgage is paid we're going to have fun and really enjoy life!" The older couple say, "Someday, when we retire, we will have all the time and we will really enjoy ourselves!"

What are your "Someday" scenarios? Suppose, "Someday" never comes?

Today, a new day begins. You have been given this day to use. Waste it – or use it for good. What

you do today is important, because you are exchanging a day of your life for it. When tomorrow comes, this day will be gone forever; in its place is something that you have left behind. Let it be something good. (unknown author)

Someday? When is that? Begin the journey NOW! When you set out on a journey and night covers the road, you don't conclude that the road has vanished. How else could we discover the stars? Isn't it better to experience and hopefully enjoy the "Now", what ever that is? Reflect on this, "The game of life is the game of boomerangs. Our thoughts, deeds and words return to us sooner or later, with astounding accuracy." (Florence Shinn)

Then there is – "If only?" "If only I'd taken better care of myself, exercised more, eaten more healthily!"

"If only I'd taken that other job, even if it didn't have job security!"

"If only, I'd asked him/her out!"

"If only I'd taken the plunge and developed that idea of mine into my own business!"

"If only we had done it then? Retirement came but only for one of us!"

What are your "If onlys"?

"Thought is the blossom; language the bud; action the fruit behind it." (Ralph Waldo Emerson.)

There's an old fable: "There were five frogs on a log. Four of them decided to jump. How many frogs are left on the log?" The most common answer is one. The second most common answer is none because, they reason, if four decided to jump, the remaining frog probably went along with the majority. The right answer is five! Deciding to do something and taking the action to do it are two entirely different things! My Dad used to say, "Aiming to – doesn't get the task done!". So evaluate the situation, make the decision and take action. "Someday" and "If only" leave disappointments and regrets. Eliminate, the "Someday" and "If only" and do it -now!

"The mass of men lead lives of quiet desperation"
(David Henry Thoreau)

"Most people go to their graves with their songs still unsung"
(Oliver Wendell Holmes)

"The butterfly counts not the months, but the moments, and has time enough."
(Rabindranath Tagore)

Out for a duck!

On Sunday 2 September, 2000 spectators watched as 165,000 rubber ducks were released into the River Thames near Hampton Court Palace, smashing the Guinness World Record for the world's biggest charity duck race. Hundreds of UK charities benefited

including the Prestwood-based Thomas Ball Children's Cancer Fund, whose supporters sponsored over 200 ducks at £2 each.

Money donated to the Fund is used to benefit children, teenagers and their families who are diagnosed with cancer. The

charity is also involved in a new bereavement group set up by parents who have lost a child to cancer, which meets on Mondays in October. For more information see their website www.thomasball.org.uk or contact Elaine Ball on 01494 890157.



Thomas Ball Charity gets a cut – but they're not out for a duck!

What inspires you?

We're looking for your motivational, uplifting, feel-good stories and contributions.

Email them to us at editor@hp16.org.uk or send them to the address on page 2.

Kids have the best lines

From a Science exam. Answers – allegedly true!

Q: Name the four seasons.

A: Salt, pepper, mustard and vinegar

Q: How can you delay milk turning sour?

A: Keep it in the cow.

Q: What is the fibula?

A: A small lie.

Q: What does "varicose" mean?

A: Nearby.

Q: What does the word "benign" mean?

A: Benign is what you will be, after you be eight!

A little girl had just finished her first week of school. "I'm just wasting my time," she said to her mother. "I can't read, I can't write and they won't let me talk!"

Please send us your contributions.



CHILTERN OPTICIANS LTD
75 High Street Great Missenden Bucks HP16 0AL

01494 868496

info@chilternopticians.com

www.chilternopticians.com

Letters

I hope *The Source* will be a great success and wish you good luck with this and future editions

My parents moved to South Heath after they got married in 1946. I was born and brought up in South Heath. My three sisters and I went to Lee Common School and then Dr Challoner's in Amersham and Little Chalfont. We are trying to put together some historical information.

Any information relating to South Heath in the period between 1947 to 1969 would be warmly welcomed.

Bob Johnson

Congratulations on this initiative to provide a community newspaper. I would also like to commend the efforts of the Prestwood Group who worked so long and hard to raise a substantial amount of money from local and national contributors to build a state-of-the-art playground on Prestwood Common. It was a formidable task.

By the time you read this, the new 20 mph speed limit will be in place in High Street, Great Missenden, which will be followed by a 7.5 tonne weight restriction that we all hope will make it a pleasanter place for visitors and local pedestrians. I will continue to press for other improvements as funds become available. In the meantime please make your views known through *The Source*, or direct to me.

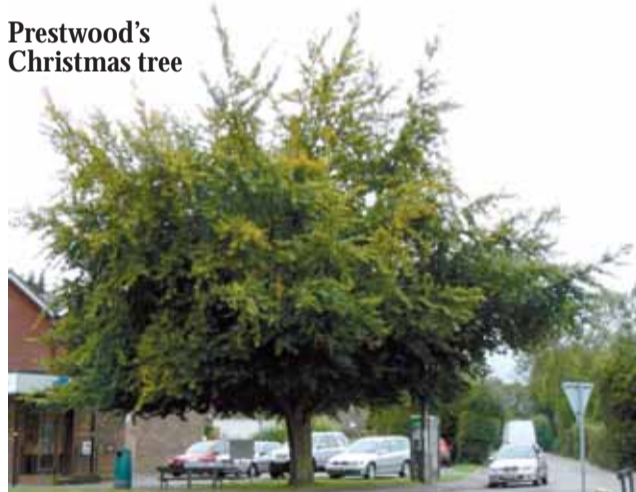
Mike Colston
County Councillor,
Great Missenden Division

Please send your letters to *The Source* by email to editor@hp16.org.uk or by post to HP16 – The Source, c/o Great Missenden Library, High Street, Great Missenden, HP16 0AL.

'Enlightening' High Streets

It may seem too early to be thinking of Christmas already – but it does “come but once a year”, and it should be a time of “good cheer!” Unfortunately lots of us find it's quite stressful too, often because of real or perceived expectations! Maybe it would be good to try to restore some of the message of peace and good will, by talking together about our “hopes and fears”. Anyway, two local events might “lighten” the load!

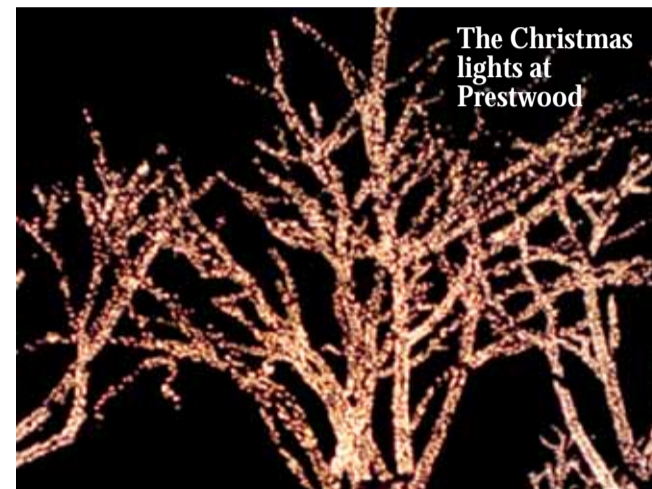
Prestwood's Christmas tree



Spirit of Christmas in Prestwood:

Saturday December 1st at 4.30 pm will be the Lighting up of the Christmas lights in Prestwood. Everyone appreciated the lights on the Tree at Chequers Corner in Prestwood last year, and this year there's a full complement of lights including the Chequers Parade lights too!

Come and join other members of our community, as local



The Christmas lights at Prestwood

businesses and organisations open their doors with festive food and drink, at a time aimed at allowing parents and young children to enjoy the festivities.

Beginning with Christmas carols led by the adult and children's choir, Father Christmas has promised to put in an early appearance even though he has a busy schedule.

It is hoped that people of all ages will join us to enjoy a Village community evening.

Great Missenden Illuminations:

On Wednesday November 28 Great Missenden will be holding an early evening of carol singing and children's activities. All restaurants and pubs in the High Street will be offering a £5.99 set menu for that night. There will be a children's Raffle, the lucky winner of which will switch the Christmas tree lights on at the Library. Please watch out for more details.

High spirits despite downpour

The Little Kingshill Village Society held their Barn Dance & Barbecue on one of the wettest nights of the summer but it was still a great suc-

cess. Some families came with three generations making it exactly what a village event should be! The Society's annual social

dinner has now been organized and tickets are on sale, in advance only, at £15 each. The ticket price includes a glass of bubbly on ar-

rival and the event is scheduled for Saturday 20 October at 7.30pm at the village hall. Call 01494 864347 for tickets as soon as possible.

Prestwood Area Community Transport

The Missendens
The Kingshills
Prestwood
The Hampdens
South & Hyde Heath



Volunteer Drivers Scheme

Are you, or is someone you know, having difficulty getting to important places?

Could you help as a driver or telephonist about once a month?

Phone us on—07968 641427

There is no charge --- But we ask for voluntary donations
We aim to make getting there and back possible and positive

Come and join us!

Enjoy singing? All sopranos, tenors and basses are invited and welcome to our friendly choir, the Great Missenden Choral Society.

It's an exciting time as our reputation grows. We will be singing for the third time at the televised Festival of Remembrance in the Queen's presence – an extraordinary, moving experience for all participants – on

Saturday 8 December, performing Rutter's 'Joy to the World' and Beethoven's Mass in C major – followed on Monday by carols with traditional Christmas supper.

Rehearsals are Monday evenings, Oldham Hall, Great Missenden, 7.45-10.00pm. For information please call Tony Overton on 01494 863581.

NOW OPEN IN PRESTWOOD

BOYS 2 MEN

GENTLEMEN'S HAIRDRESSER

TEL: 01494 890313

MEN'S CUT	£10
BOY'S CUT	£8
UNDER 5'S	£6
OAP'S	£8

OPENING TIMES

MON – FRI 9AM – 6PM

SATURDAY 8AM – 3PM

AMPLE FREE PARKING

6 CHEQUERS PARADE, PRESTWOOD

TEL: 01494 890313

The Source HP16 events



October

Tuesday October 9

Prestwood Evening WI AGM and Harvest Auction Prestwood Village Hall 7.45pm. Details Mrs. Helen Glenister 01494 863972.

Thursday 11 October

Prestwood Gardening Society Perennial Pleasures (Euphorbias, Lilies and Hellebores) J K Burras Village Hall 8pm. Details from Joan Hawes 01494 865272.

Friday 12 October

Cosi Fan Tuti - A semi-staged, English language performance at St Peter and St Paul Church, Great Missenden, in aid of African Village Support. 7.45pm. Details from

Saturday 13 October

Prestwood Gardening Society. Harvest Supper Village Hall 7.45 for 8pm. Details from Joan Hawes 01494 865272

Saturday 13 October

Holy Trinity Church Prestwood Churchyard Working Party at Holy Trinity Prestwood in conjunction with Prestwood Nature 10am. Lunch provided. Contact Judith McBride 01494 863627.

Saturday 13 October

Farm Walks at Collings Hanger Farm Wycombe Road Prestwood (Wren Davis). 10-12 noon Turkey Walk meet at Collings Hanger Farm to walk across the fields to Nanfans Farm to view the Kelly Bronze turkeys being raised for Christmas. Followed by "turkey tasting".

Saturday 13 October

Scrub clearance at Holy Trinity churchyard, Prestwood. 10am to 4pm, lunch provided. (Prestwood Nature)

Sunday 14 October

Priestfield Private Arboretum, off Stony Lane, Little Kingshill. Public open day.

Saturday 20 October

Café Lite. Cafe and club for 4-11 year-olds. Prestwood Methodist Halls, from 4-5pm

Sunday 21 October

Farm Walks at Collings Hanger Farm Wycombe Road

Prestwood (Wren Davis). 2-4pm Apple Day Walk Visit the orchards at Collings Hanger Farm to see the different varieties of apple being grown. Apple bobbing for the children.

Sunday 21 October

All different, all equal. Celebrate One World Week, free multi-media event led by young people from the community (SPLAT), Great Missenden Memorial Hall, 4-5pm.

Friday 26 October

Bridge Day, Novices or experts £15 including lunch. Proceeds to Iain Rennie Hospice and PACT at Little Kingshill Village Hall, 9.30am to 4.30pm. To book contact Mary McConnell 01494n863084.

Prestwood Nature Field Day

Spend Sunday afternoon visiting an interesting site, look for particular species. Meet at 2pm at 49 Lodge Lane, Prestwood, (parking nearby) finish at 4pm.

Sunday 28 October

Fungus foray at Angling Spring Wood. Meet at gate by main road from Great Missenden to Prestwood (Prestwood Nature).

Tuesday 30 October

Prestwood Society Talk on Nursing in the 50s and 60s. Village Hall 8pm. Contact Mike Cobleby 01494 864952

November

Saturday 3 November

New Demonstration Wildlife Garden initial clearance of scrub at Sprinters Leisure Centre, Honor End Road, Prestwood. Car parking on site. (Prestwood Nature)

Tuesday 6 November

Prestwood Nature annual get-together. Food, drink, members' news, socialising. Prestwood Village Hall, 7.30-10pm. Wednesday 7 November **Prestwood Afternoon WI** AGM Prestwood Village Hall 2.15pm. Details from 01494 866894

Thursday 8 November

Prestwood Gardening Society Colour with Drought Tolerant Shrubs and Perennials. Jeanne Bliss Village Hall 8pm. Details from Joan Hawes 01494 865272.

Sunday 11 November

Remembrance Sunday at St Peter and St Paul Church begins with the traditional silence at 10.55 next to the war memorial followed by a service in church. 10.50am

Sunday 11 November

A Remembrance Sunday special evening service called 'Remembering with love'. This will be a warm, quiet service specially focused on bring our grief and our gratitude into God's love. St Peter and St Paul Church 6pm

Tuesday 13 November

Prestwood Evening WI Street Furniture (Part 2) Mr. P. Bradley. Prestwood Village Hall 7.45pm. Details Mrs. Helen Glenister 01494 863972

Sunday 18 November

Prestwood Nature Field Day, 2-4pm (see explanation on 21 October).

Thursday 22 November

Bring and Buy in aid of Ian Rennie Hospice. 10am - 12 noon. 14 Honorwood Close.

Saturday 24 November

Boug's Meadow, work party clearance and tidying. Meet at Link Road Car Park 10am - 1pm. (Prestwood Nature)

Wednesday 28 November

Great Missenden lights with carol singing and children's activities. All restaurants and pubs in the High Street will be offering a £5.99 set menu.

December

Saturday 1 December

Christmas Lights Prestwood Chequers Parade. Details from Councillor Laurel Swayne 01494 863080

Saturday 1 December

Christmas Bazaar at Damien Hall (below Catholic Church) 10am - 1pm.

Wednesday 5 December

Prestwood Afternoon WI Christmas Favourites - bring your favourite Christmas recipe with samples. Village Hall 2.15pm. Details from 01494 866894.

Sunday 9 December

Perks Lane picnic site, work party off Hampden Road near

Prestwood. Dogwood clearance. 10am - 1pm. (Prestwood Nature)

Tuesday 11 December

Prestwood Evening WI Christmas meeting Entertainment by The Bonaccords. Prestwood Village Hall 7.45pm. Details Mrs. Helen Glenister 01494 863972

Thursday 13 December

Prestwood Gardening Society AGM followed Favourite Gardening Books and Gardens. Betty Hardy Village Hall 8pm. Details from Joan Hawes 01494 865272.

Saturday 15 December

The Roald Dahl Foundation Christmas Concert. At St Peter and St Paul Church, Great Missenden Details 01494 890465

Sunday 16 December

Prestwood Nature Field Day, 2-4pm (see explanation on 21 October).

Wednesday 19 December

Light up a Life in conjunction with The Iain Rennie Hospice at Home Prestwood Methodist Church 8pm. Details from Mrs Pam Sitford 01494 862439

Autumn events at The Roald Dahl Museum and Story Centre

81-83 High Street
Great Missenden
Bucks
HP16 0AL
01494 892192
www.roalddahlmuseum.org

Saturday 13 October

Big Draw Free for Museum visitors.

Sunday 14, 21 and 28 October

Chocolate Decorating For all ages

Tuesday 23 October

Archive yourself For 8+ year olds.

Wednesday 24 October

Jack Bolt and the Highwaymen's Hideout For 5+ year olds

Thursday 25 October

George's Marvellous Experiments For 7+ year olds.

Friday 26 October

Halloween chocolate decorating

Saturday 27 October

How Bees Be For 4 to 8 year olds and their families

Saturday 3 November

Wormy spaghetti placemats For 5+ year olds.

Saturday 10 November

Discover Dahl's Archives For 10+ year olds. FREE for museum visitors.

Sunday 11 November

Chocolate Decorating For all ages

Saturday 17 November

Fantastic Mr. Fox For 5+ years.

Saturday 24 November

Buckswashing Animation For 7+ year olds.

Wednesday 28 November

Glorious pre-Christmas event. Late night shopping and lots of fabulous festive fun.

Unless otherwise stated there is a charge for activities, in addition to the museum entry charge. Many activities should be pre booked. For more information contact the Roald Dahl Museum and Story Centre

Great Missenden library

New opening hours Monday - closed; Tuesday 9.30am -5pm; Wednesday 9.30am -5pm; Thursday 9.30am -1pm; Friday 9.30am -7pm; Saturday 9.30am -1pm; Sundays and Bank holidays - closed

Prestwood Mobile library

Prestwood Village Hall alternate Wednesday 11.40-12.30 October 10, 24, November 7, 21 December 5, 19

Local Councillors' Surgery

County District and Parish Councillors available to meet with residents, Great Missenden Library 1st Saturday of each month 10-11am.

Tell people about your forthcoming events.

If you run a local community organisation planning an event in HP16 tell us about it. Send details including: date; event; venue; time; cost [if any]; contact name, telephone number and e mail address [if available]. To: editor@hp16.org.uk or tel:01494 865333

PRESTWOOD THEATRE CLUB



SUPPER QUIZ

SATURDAY 27TH OCTOBER

7.30PM

Prestwood Village Hall

FISH/CHICKEN and CHIPS SUPPER

PLUS DESSERT AND ENTERTAINMENT

WHILST YOU EAT

£10 per ticket

PLEASE RING 0709 2015796

Tables: maximum 8 people but individual tickets available & table numbers made up as appropriate.

LICENSED BAR



Community service?

Missenden makes a racquet

That bastion of traditional British outdoor pass-times and one of the longest established sports clubs in the area, Great Missenden Lawn Tennis Club, laid on some excellent events for its many members to help them enjoy the late summer sunshine.

The club attracts hundreds of people from the local community and plays a notable part in it. One of their most popular social tennis tournaments in the annual fixtures calendar, the Andy Ras Tournament, took place in September. Now in its twelfth year, the event is as popular and competitive as ever, with dozens of mixed doubles matches being played. After

some closely fought encounters the eventual winners were mother and son team, Alex and James Harley of Little Hampden. James is among the best of many young tennis players produced in the area in recent years and is about to embark on the final year of his degree studies at Bath University, having returned recently from a gap-year spent working in Australia.

Earlier in the month the club staged a charity doubles tournament, one of a number of similar events held at various clubs around the country to raise money for a range of local good causes, as well as providing a great day of top quality tennis

for all involved. Great Missenden was generating funds for the Iain Rennie Hospice at Home and managed to raise a donation of several hundreds of pounds.

The finals of the club's adult and junior closed tournament in September produced some stunning individual winners: eleven year-old Alex Fage took top spot in the boys' under 11, under 13 and under 15 categories, while Nicky Gross of Prestwood prepared for her return to Loughborough University by taking the ladies' singles, ladies doubles and mixed doubles trophies. And they told us British tennis was dead!

Sprinting ahead

A result of the partnership between Prestwood Sports and Leisure Association, Chiltern District Council and Wycombe Leisure Limited, Sprinters Leisure Centre on Honor End Lane, Prestwood, has become a focal point for sports and exercise in the local area since it opened in 2003. Everyone is welcome whether you are a member of a sports team, a family looking for some activities for kids or just looking to get fitter and healthier!

Saturday September 1 saw the site hold its first Free Day of Sports to celebrate 5 years until the 2012 Olympics. Guests enjoyed free football coaching, free

tennis sessions, health checks and free gym inductions.

Louise Parr, manager of the centre, commented: "It was a great day and hopefully one that can be built on each year until the start of the Olympics in London. It is important that we use the Olympics as a means to encourage young people into sport. The greater the participation at grass roots level, the greater the haul of medals at future Olympics!"

The Free Day of Sport was held at all leisure centres across Chiltern, Wycombe and South Bucks Districts. Look out for next year's event, again to be held in early September.

In addition, the centre's Sport Sessions for boys and girls aged 8-12 have now re-started, with Multi-Sports on Tuesdays from 5-6pm and Football sessions every Thursday, also from 5-6pm. Just turn up – only £2 per session – new players are always welcome. Learn new skills, make new friends and have fun!

Sprinters facilities comprise a fully-equipped gym, aerobics studio, sun-bed, tennis courts, football pitches, a multi-use games area and a café. Opening times are 7am to 10pm Monday to Friday and 8.30am to 6pm weekends. Contact the centre on 01494 866688 for more details.



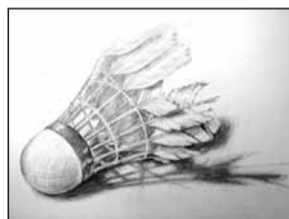
Feel the burn

What's happening at your sports or leisure club?

Email us at editor@hp16.org.uk with details or write to us at the address on page 2.

Acknowledgments

A huge THANK YOU to all our contributors. Especially to James Taylor for artwork and youth section layout; to our accountant, Chris Wise of Ballinger, whose contribution to set up was invaluable; to Roger and Anita Aslett of Prestwood (Princes Risborough Camera Club) and to Tony Marshall and his colleagues at Prestwood Nature for being such willing and flexible photographers; and finally to Maurice Roberts for his perseverance and positive input.



BADMINTON CLUB: come and play social games with a friendly, non-league club on Fridays from 8-10 pm. For further details phone Jean or Graham 01494 728118

Enter the chocolate doors of this great little museum and

- delve into Roald Dahl's archive on our touch-screen monitors
- create your own gobblefunk words and stories
- join in our phizz-whizzing events: storytelling, chocolate decorating, buzzwangling science and craft sessions
- visit our fantabulous Shop and the delumptious Café Twit

81-83 High Street Great Missenden Buckinghamshire HP16 0AL
www.roalddahlmuseum.org 01494 892192

